

Princess Cruises (2012) - Lotus Spa signs  
Produced with adobe illustrator/photoshop

Thank you for viewing my architectural portfolio  
This is only a small portion of work I have created over the  
last 33 + years. I like to be creative and challenge myself.  
Thanks, Pete

**signage** [sahy-nij] *noun*

graphic designs, as symbols, emblems, or words, used especially for identification  
or as a means of giving directions or warning.



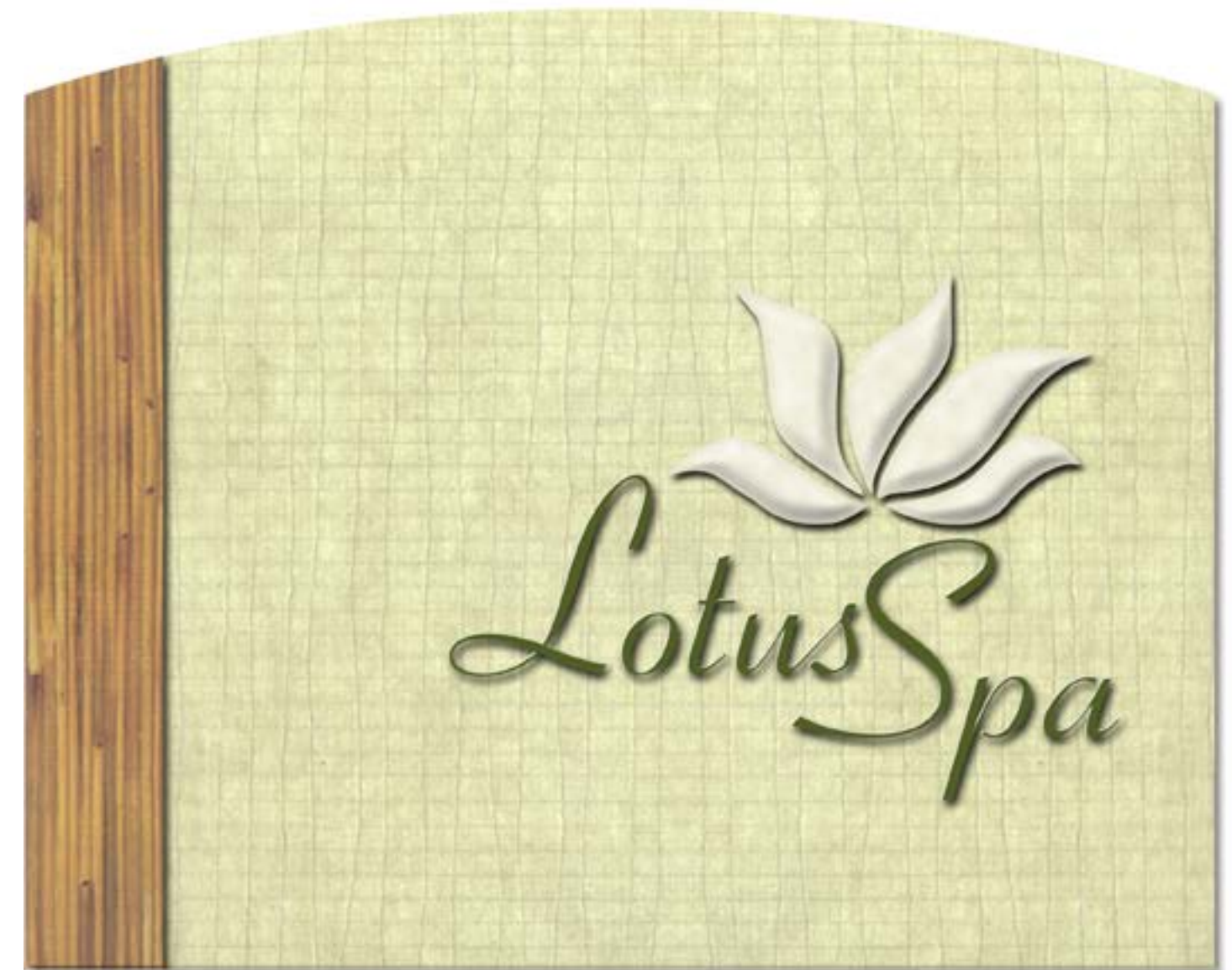
wayfinding



safety



banner

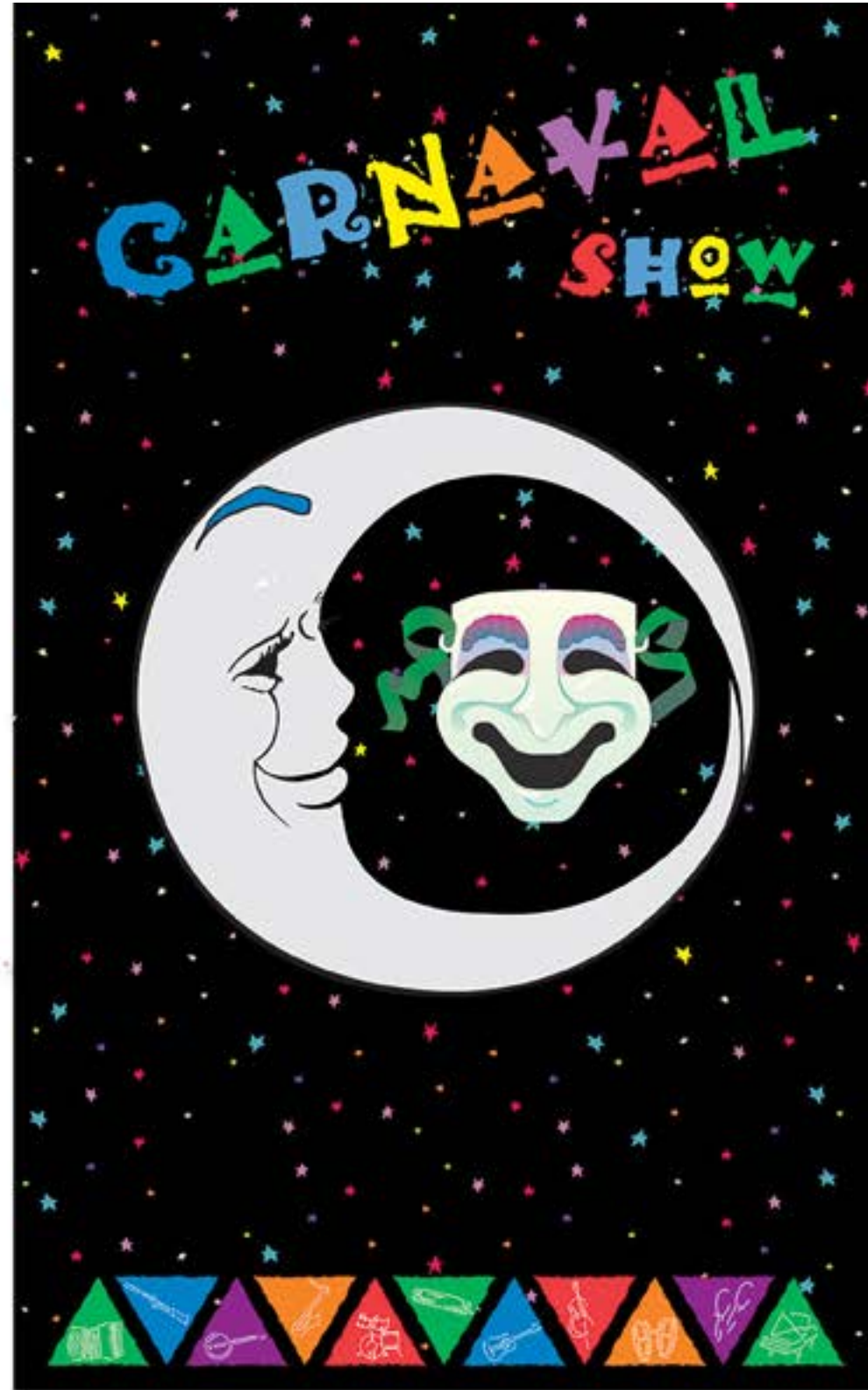
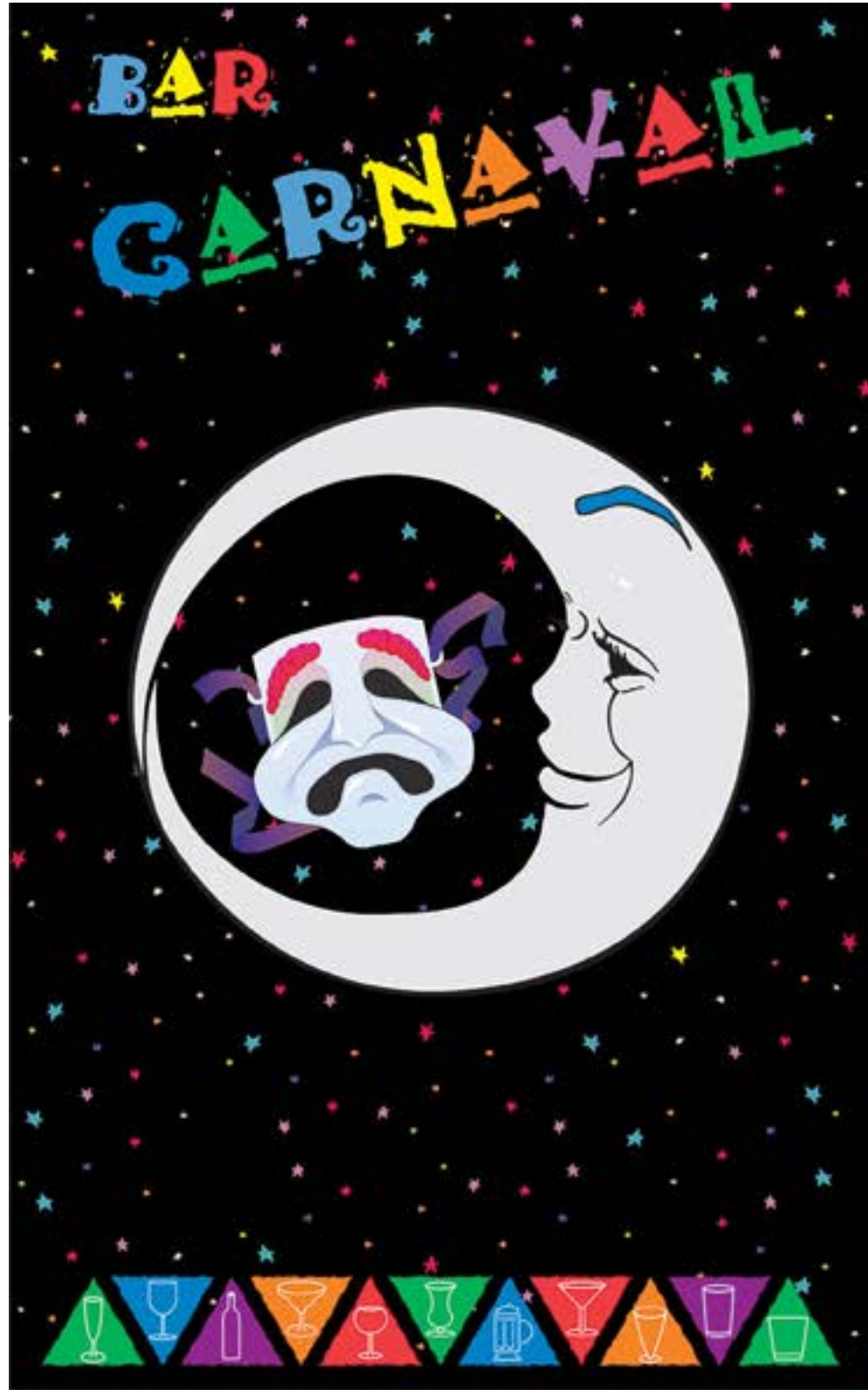


"Design won't save the world,  
but it damn sure makes it look good"  
— Mary Crawford, author

ISP Cruises (2009) - Vision Star Restaurante Altamira signs  
Produced with adobe illustrator/photoshop



ISP Cruises (2009) - Vision Star Carnival Bar & Showroom signs  
Produced with adobe illustrator/photoshop



ISP Cruises (2009) - Vision Star Public signs  
Produced with adobe illustrator/photoshop



ISP Cruises (2015) - Ocean Endeavour Public signs  
Produced with adobe illustrator/photoshop



ISP Cruises (2012) - Ocean Diamond Public signs  
Produced with adobe illustrator/photoshop



Holland America Line (2010-2016) - Charity Golf Tournament signs  
Produced with adobe illustrator/photoshop

# Holland America Line® 2016 Golf Tournament

## Signature Sponsors

Aerostream USA  
Blue Water Shipping A/S  
Bolidt Cruise Control Corp  
C.P. Marine  
Carrier Corporation  
Case Marine, Inc  
D2 Marine Solutions Inc.

Duap Industries Inc.  
Hempel USA inc.  
IWS – International Warehouse Services  
Metric Marine & Industrial  
Motor-Services Hugo Stamp Inc.  
Navalimpianti USA Inc.

Siemens  
TransGroup SEA  
United Ship Service  
Vigor Industrial  
W and O Supply  
Wartsila North America, Inc.  
Witt Co.

## Tournament Sponsors

Alfa Laval - PA.  
Almaco Group, Inc.  
AMI Exchangers LTD  
Biancchi & Cecchi Service Inc.  
Borderline International  
Croon Elektrotechnik B.V.

Datrex Miami  
Global Supply Company, Inc.  
Greggs Marine Interiors, LTD  
Jotun Paints Inc.  
Marine Depot International  
Multinal Group B.V.  
Port Marine of California

Priano Marchelli & C Srl  
Pump Industries  
Starboard Marine Supplies  
Total Marine Solutions  
West Coast Insulation Inc.  
Wilhelmsen Technical Solutions Inc.

Thank you, Holland America Line and Seabourn

Signs donated by  Maritime Associates, Inc. • [www.marinesigns.com](http://www.marinesigns.com)



Regent Cruises (2004) - Regent Public signs  
Produced with adobe illustrator/photoshop

## Swimming Pool & Whirlpool Rules

<p>There is no lifeguard on duty.</p> <p>Shower before entering pool and whirlpool</p> <p>Guests use the pool and whirlpool at their own risk.</p> <p>Diving and running are prohibited.</p> <p>Some fabrics may fade due to the combination of chlorine and sea water.</p> <p>The use of glassware is prohibited in and around the pool area.</p> <p>For your safety use the handrails and enter and exit slowly.</p> <p>Children under 16 years of age are not permitted to use the pool and whirlpool without supervision.</p> <p>Swimming pool bather load:</p>	<p>Pregnant women, elderly persons, children, individuals on medication or who have underlying medical conditions such as cardiovascular disease, diabetes, high or low blood pressure, anyone using anticoagulants, vasoconstrictors, vasodilators, stimulants, hypnotics, narcotics, tranquilizers and those who are particularly susceptible, such as those who are immunocompromised are warned against using the whirlpool.</p> <p>Please use additional caution when exceeding 15 minutes of exposure.</p> <p>No children/adults in diapers or who are not toilet trained are permitted in the pool and whirlpool.</p> <p>Do not use these facilities if you are experiencing diarrhea, vomiting, or fever.</p> <p>Whirlpool bather load:</p>
---	---

## Swimming Pool & Whirlpool Rules

There is no lifeguard on duty.

Shower before entering pool and whirlpool

Guests use the pool and whirlpool at their own risk.

Diving and running are prohibited.

Some fabrics may fade due to the combination of chlorine and sea water.

The use of glassware is prohibited in and around the pool area.

For your safety use the handrails and enter and exit slowly.

Children under 16 years of age are not permitted to use the pool and whirlpool without supervision.

Pregnant women, elderly persons, children, individuals on medication or who have underlying medical conditions such as cardiovascular disease, diabetes, high or low blood pressure, anyone using anticoagulants, vasoconstrictors, vasodilators, stimulants, hypnotics, narcotics, tranquilizers and those who are particularly susceptible, such as those who are immunocompromised are warned against using the whirlpool.

Please use additional caution when exceeding 15 minutes of exposure.

No children/adults in diapers or who are not toilet trained are permitted in the pool and whirlpool.

Do not use these facilities if you are experiencing diarrhea, vomiting, or fever.

Swimming pool bather load: \_\_\_\_\_

Whirlpool bather load: \_\_\_\_\_



## Croquet: General Rules

- **Object:** To win at croquet, a player or team must score the highest number of points. One point is awarded for every wicket passed through in the proper direction and proper order. (That means there are two points awarded for five of the wickets, 1 point each for four wickets, and one point for each stake for a total of 16 points).
- Each player must drive his ball around the course in the order indicated on the diagram to the right.
- When all the players on a team have completed the course, the game is over and the points are tallied.
- When a player hits the final stake, he ceases to take turns. It is sometimes to a team's advantage for a player to pass through all the wickets, but not hit the final stake in order to return to the field to help his team mates. However, this player must eventually hit the final stake in order to ultimately win the game.

Oceania Cruises (2016) - Sirena Public Signs signs  
Produced with adobe illustrator/photoshop

# *Sirena Lounge*

